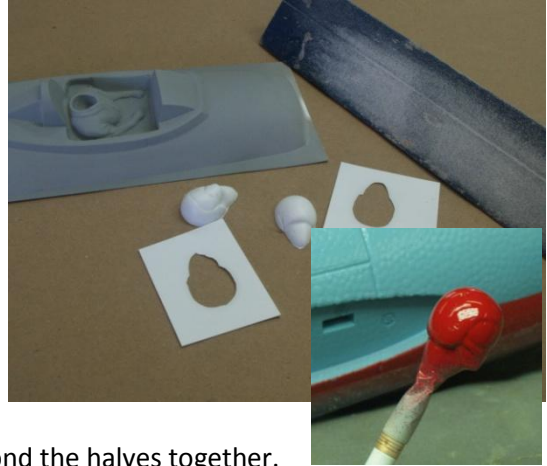


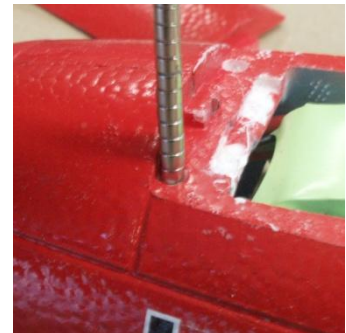
It all starts with trimming off the ends of the cockpit tub and canopy. Trim the minimum amount off because you only have about 1/8 inch extra to work with. Prime the cockpit tub and add the desired colors as you work on the rest of the project. To assemble the pilot's head, block sand the back side of the parts sheet until the material around the edge becomes thin, your progress can be tracked by holding it up to a bright light. If you sand through, stop and complete the rest with a hobby knife.



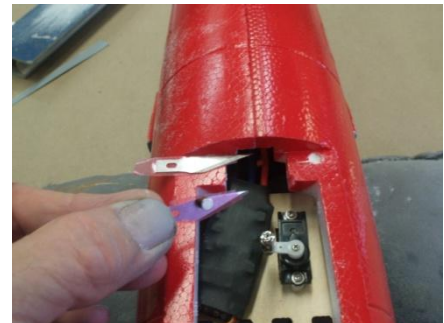
Apply plastic cement (not CA adhesive) to the edges and bond the halves together. Allow it to dry completely then sand the seam, prime and paint. Using spray enamel for the first coat will give you a very glossy finish. there is a tutorial on painting pilot figures available on the parkflyerplastics website under instructions.



Align the canopy over the fuselage matching the molded panel lines with the lines formed in the canopy. Mark and trim the ends keeping as much overlap as possible end to end. the amount of plastic used from side to side is up to you.



To attach the hatch Small rare earth magnets are used; (not in the kit but available at Radio Shack) Use a reamer or countersink to sharpen the inside edge of a brass tube that is slightly larger than the magnets you selected. Use the tube in a rotating motion to cut a clean hole in the foam . Note, the holes should be located near the edge but no further than the edge of the canopy. Apply plastic packing tape a piece of flat metal (hobby knife blades work well). Attach the magnets to the blades and fill the hole with epoxy and insert the magnet using the blade to ensure the magnet is flush with the fuselage surface.



After the epoxy sets up remove the blades and cover the magnet areas with plastic sandwich wrap. allowing the second magnet to hold it in place. Place the canopy back on the fuselage and mark the spaces over the magnets. sand the inside of the canopy around the marks for a good bond.



Apply JB weld epoxy or thickened hobby epoxy over the magnets and place the canopy in position. turn the model upside down to allow the epoxy to contact the canopy surface. note you should practice this step and if tape is used to hold the canopy in position use "low stick" or painters tape to prevent removing the paint from the fuselage when peeled off.



The next few steps is up to you but you **MUST** test fit the canopy **BEFORE** you bond the head in place. The mig -15 was a very small plane and if the pilot was taller than 5 ft. his helmet had scratches on the top. in short. the clearance is very close. Also, if you want the lightest hatch possible trim the cockpit tub close to the canopy window frame edge. If you want a firm feeling hatch; trim the tub to the inside edge of the battery area. So . . . Bond the pilots head into body and allow it to dry. Rough sand the edge of the cockpit tub and the canopy where they meet. The cockpit tub will nest very well in the canopy so use a small amount of epoxy to prevent epoxy entering the cockpit. Tape off the windows and paint the canopy. Valspar "Cheery" bought at Walmart was a very good color match for this model.



This upgrade kit was designed to be independent from the stock hatch so you could have a spare for whatever reason. The stock hatch can be used if desired. To install, cut the foam away horizontally just under the window line and a little vertically around the tub area. The tub and canopy should be bonded to the hatch while installed on the model to prevent changing the shape of the foam hatch.

